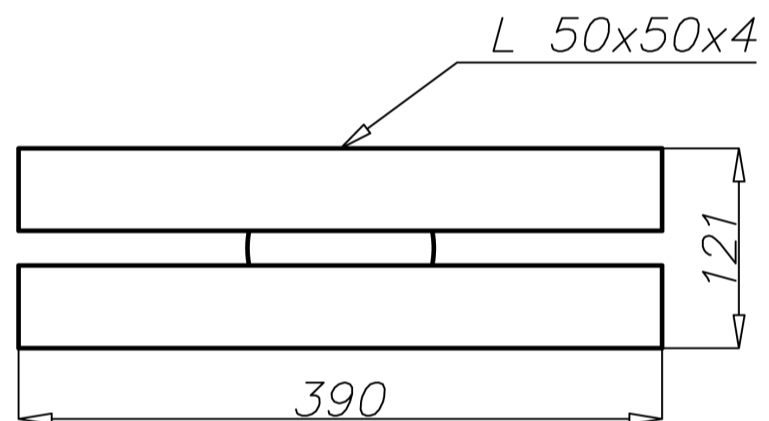
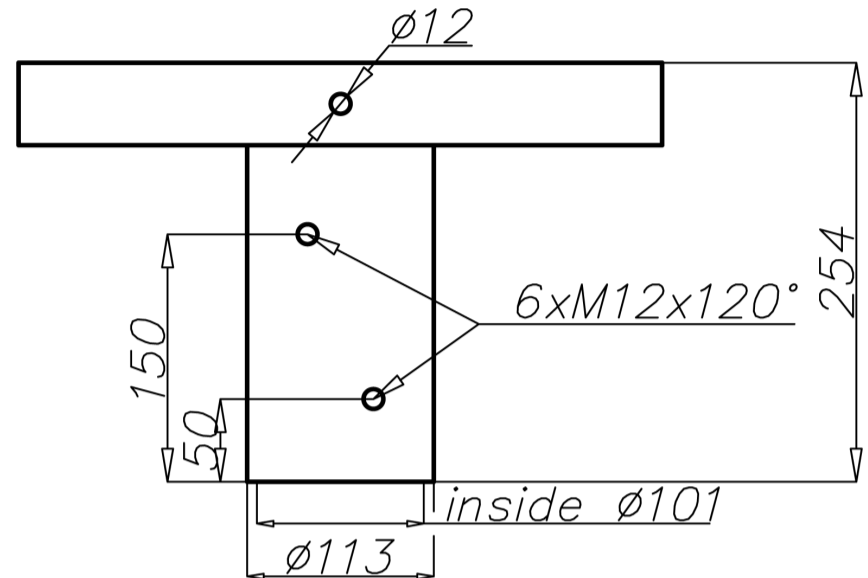
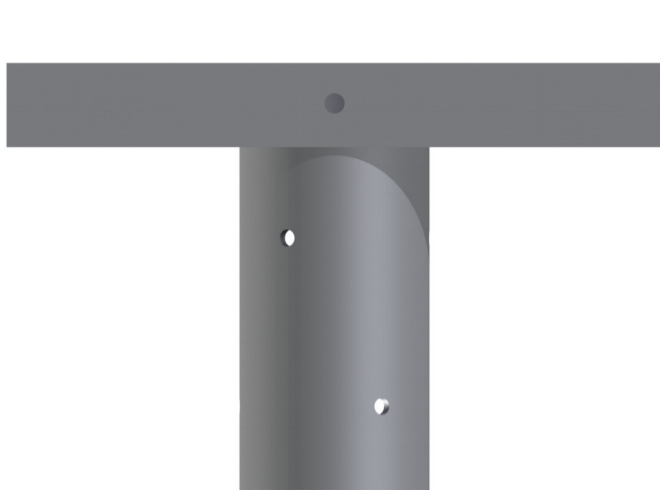


# Aluminium extension arm WM-2



## Technical data

| Extension arm                                       | WM-2   |
|---|--|
| Product code  | 474020   |
| Application   | aluminium light masts with ending $\varnothing 100 \times 180$ |
| Arm quantity  | 2  |
| Net weight [kg]                                     | 2,3  |
| Windage [m <sup>2</sup> ]                           | 0,04   |
| Volume [m <sup>3</sup> ]                            | 0,01   |
| Assembling diameter of luminaire $\varnothing$ [mm] | x  |
| Compatible luminaires                               | projectors   |

- anodizing in 12 colours
- option of powder painting in RAL colours (other colours available on request)
- packing: sleeve material
- CE certificate valid for use on poles manufactured by ROSA company